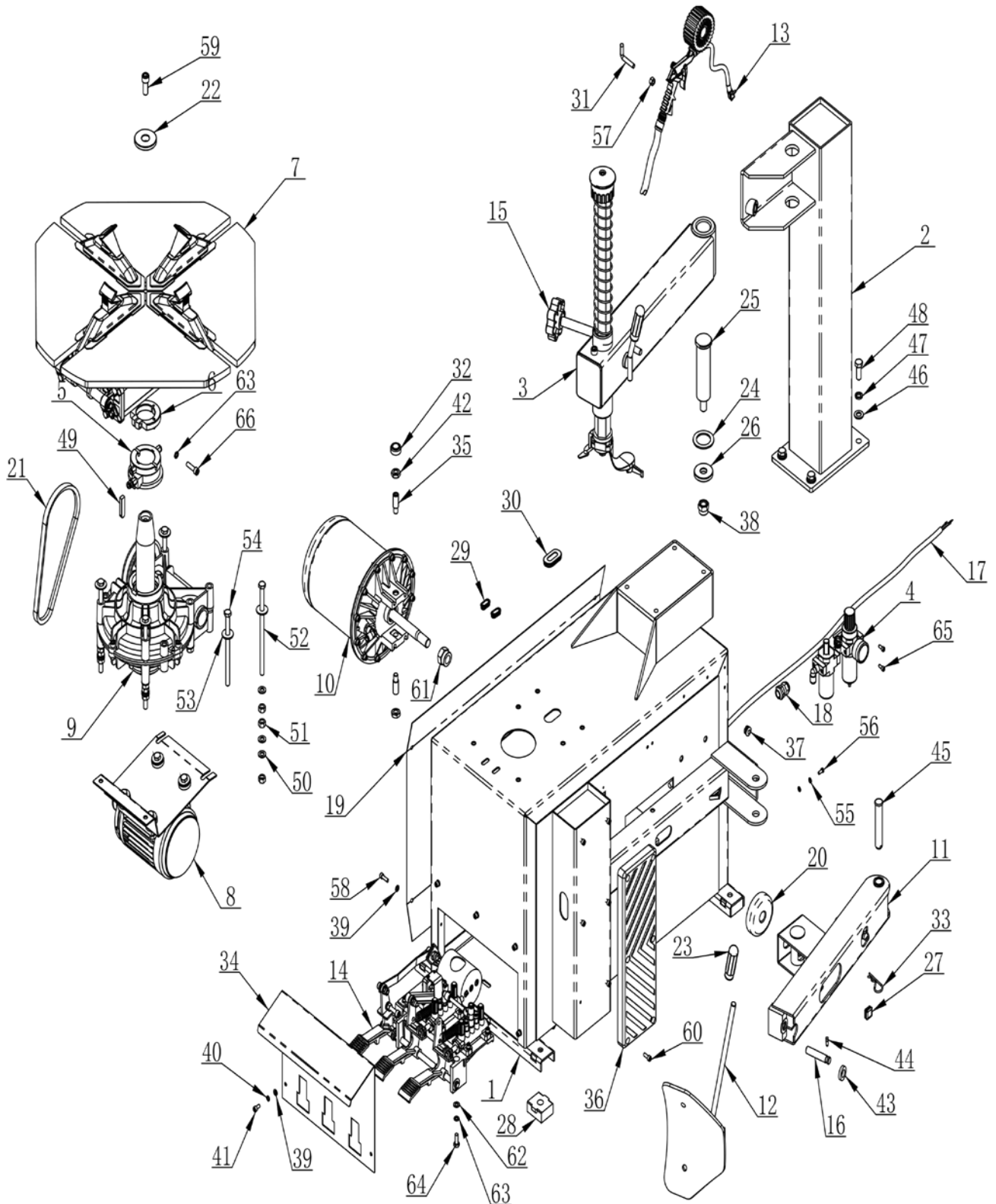


DM 0500BL

DEMONTAGE PNEUS SEMI-AUTOMATIQUE 10"-21"

SEMI-AUTOMATIC TIRE CHANGER 10"-21"



DM 0500BL

DEMONTE PNEUS SEMI-AUTOMATIQUE 10"-21"

SEMI-AUTOMATIC TIRE CHANGER 10"-21"

ITEM	DESCRIPTION.	QT. Y
1	BODY	1
2	VERTICAL COLUMN	1
3	SWING ARM	1
4	AIR REGULATOR ASSEMBLY	1
5	ROTATING UNION	1
6	CLAMP RING	1
7	TURNTABLE ASSEMBLY	1
8	MOTOR	1
9	GEARBOX ASSEMBLY	1
10	BEAD BREAKER CYLINDER ASSEMBLY	1
11	BEAD BREAKING ARM ASSEMBLY	1
12	BEAD BREAKER BLADE	1
13	INFLATING GUN ASSY	1
14	PEDAL ASSEMBLY	1
15	HANDLE WHEEL	1
16	ROTATION SPINDLE	1
17	CABLE	1
18	CABLE CONNECTOR	1
19	SIDE PANEL	1
20	RUBBER WASHER	1
21	BELT	1
22	PRESS COVER	1
23	RUBBER COVER	1
24	ADJUSTING WASHER	2
25	ROCKER VERTICAL SHAFT	1
26	SHAFT WASHER	1
27	STOP-UP	1
28	RUBBER FOOT	4
29	PLUG A	2
30	PLUG B	1
31	INFLATING GUN HOOK	1
32	SEALED COVER	1
33	CIRCLIP	1
34	PROTECTIVE COVER	1
35	SCREWS M14X42	2
36	RIM SUPPORT	1
37	HELPER RUBBER PLUG	2
38	I-TYPE PREVAILING TORQUE TYPE HEXAGON LOCK NUT	1
39	FLAT WASHER	9
40	STANDARD SPRING WASHER	5

DM 0500BL

DEMONTE PNEUS SEMI-AUTOMATIQUE 10"-21"

SEMI-AUTOMATIC TIRE CHANGER 10"-21"

ITEM	DESCRIPTION.	QT. Y
41	INNER HEXA CYLINDRICAL SCREW	5
42	HEXANGULAR THIN NUT	2
43	WAVE-FORM SPRING WASHER	1
44	SQUARE HEAD CYLINDRICAL TERMINUS SET SCREW	1
45	PIN SHAFT	1
46	FLAT WASHER	4
47	STANDARD SPRING WASHER	4
48	HEXANGULAR BOLT	4
49	COMMON FLAT KEY	1
50	FLAT WASHER	14
51	HEXANGULAR NUT	14
52	BOLT M10X200	4
53	large washer C grade	6
54	HEXANGULAR BOLT	2
55	FLAT WASHER	2
56	HEXANGULAR BOLT	1
57	HEXANGULAR NUT	1
58	INNER HEXA CYLINDRICAL SCREW	4
59	INNER HEXA CYLINDRICAL SCREW	1
60	INNER HEXA CYLINDRICAL SCREW	6
61	PRRVAILING TORQUE M18X1.5	1
62	FLAT WASHER	2
63	STANDARD SPRING WASHER	3
64	HEXANGULAR BOLT	2
65	INNER HEXA CYLINDRICAL SCREW	2
66	INNER HEXA CYLINDRICAL SCREW	1

DM 0500BL

DEMONTE PNEUS SEMI-AUTOMATIQUE 10"-21"

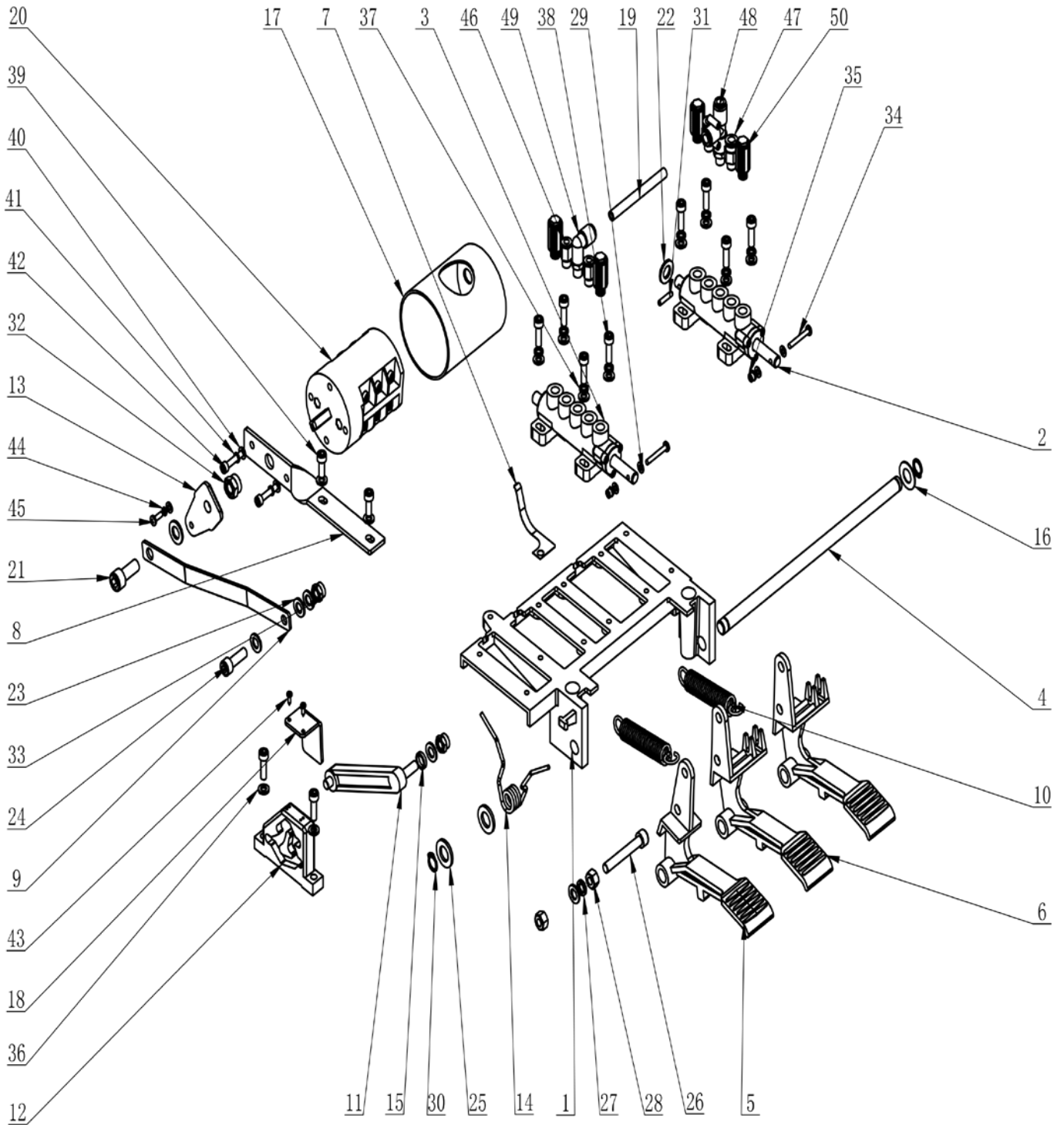
SEMI-AUTOMATIC TIRE CHANGER 10"-21"

ITEM	DESCRIPTION.	QT. Y
1	SWING ARM	1
2	LOCK HANDLE	1
3	VERTICAL SHAFT SPRING	1
4	HEXAGON SHAFT	1
5	DECORATING COVER	1
6	PRESS WASHER	1
7	ROLLER	1
8	SHOCK ABSORBER WASHER	1
9	SPRING	1
10	HEXAGON LOCK PLATE	1
11	PLASTIC COVER	1
12	VERTICAL SHAFT COVER	1
13	DEMOUNTING HEAD	1
14	ROLLER BOLT	1
15	RUBBER COVER	1
16	ADJUSTING WASHER	1
17	INNER HEXA CYLINDRICAL SCREW	1
18	SHAFT ELATIC BIG RETAINING RING A-TYPE	1
19	INNER HEXA FLAT TERMINUS SET SCREW	2
20	STANDARD SPRING WASHER	1
21	HEXANGULAR BOLT	1
22	INNER HEXA FLAT TERMINUS SET SCREW	2
23	FLAT WASHER	2
24	HEXANGULAR NUT	1
25	1-TYPE PREVAILING TORQUE TYPE HEXAGON LOCK NUT	2
26	INNER HEXA CYLINDRICAL SCREW	1

DM 0500BL

DEMONTE PNEUS SEMI-AUTOMATIQUE 10"-21"

SEMI-AUTOMATIC TIRE CHANGER 10"-21"



DM 0500BL

DEMONTE PNEUS SEMI-AUTOMATIQUE 10"-21"

SEMI-AUTOMATIC TIRE CHANGER 10"-21"

ITEM	DESCRIPTION.	QT. Y
1	PEDAL SUPPORT	1
2	VALVE	1
3	VALVE	1
4	BOTTOM SHAFT	1
5	PEDAL	1
6	PEDAL	2
7	SPRING PLATE	1
8	SWITCH BASE PLATE	1
9	SWITCH CONNECTING PLATE	1
10	SPRING	2
11	CAM CONNECTING ROD	1
12	CAM	1
13	REVERSE LEVER	1
14	TORSION SPRING	1
15	SPACER	1
16	WASHER	1
17	SWITCH COVER	1
18	CAM BAFFLE PLATE	1
19	HOSE	1
20	SWITCH	1
21	INNER HEXA CYLINDRICAL SCREW	1
22	FLAT WASHER	2
23	FLAT WASHER	5
24	INNER HEXA CYLINDRICAL SCREW	1
25	FLAT WASHER	2
26	INNER HEXA CYLINDRICAL SCREW	1
27	STANDARD SPRING WASHER	1
28	HEXANGULAR NUT	2
29	FLAT WASHER	5
30	SHAFT ELATIC BIG RETAINING RING A-TYPE	2
31	ELASTIC CYLINDRICAL PIN, HEAVY	1
32	I-TYPE PREVAILING TORQUE TYPE HEXAGON LOCK NUT	1
33	I-TYPE PREVAILING TORQUE TYPE HEXAGON LOCK NUT	2
34	CROSS PANHEAD SCREW	2
35	I-TYPE PREVAILING TORQUE TYPE HEXAGON LOCK NUT	2
36	FLAT WASHER	12
37	STANDARD SPRING WASHER	8
38	INNER HEXA CYLINDRICAL SCREW	10
39	INNER HEXA CYLINDRICAL SCREW	2
40	FLAT WASHER	2

DM 0500BL

DEMONTE PNEUS SEMI-AUTOMATIQUE 10"-21"

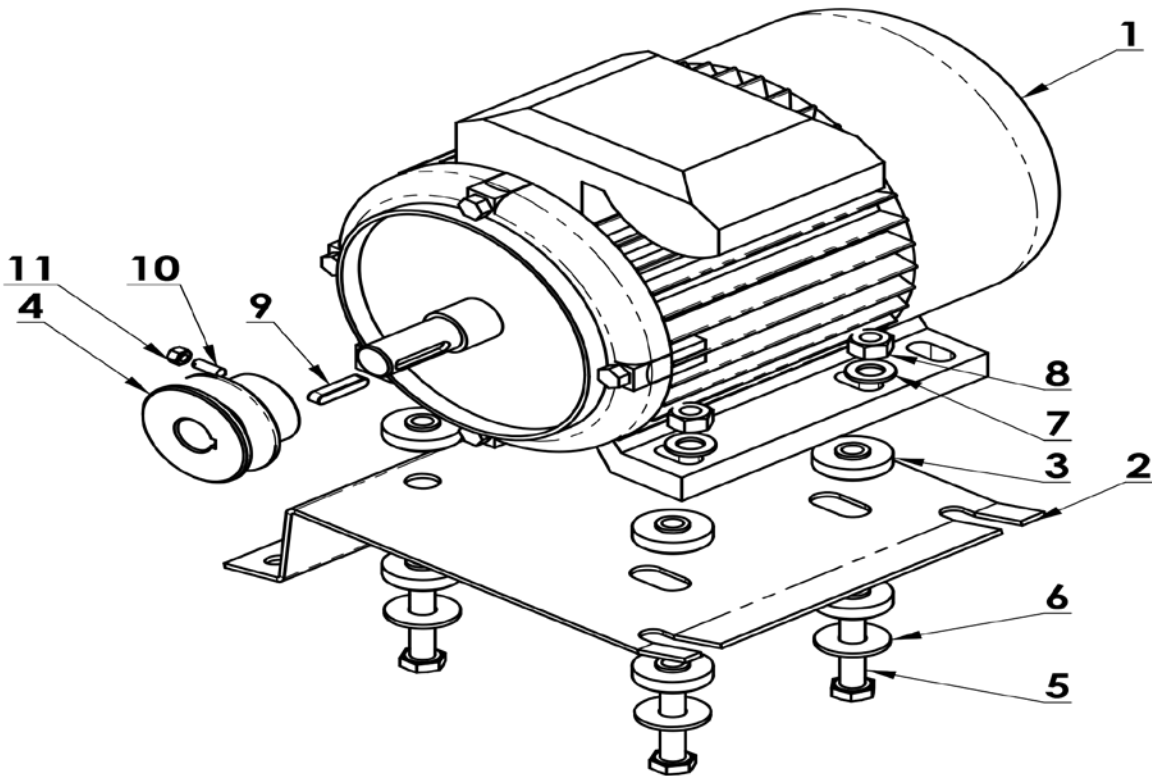
SEMI-AUTOMATIC TIRE CHANGER 10"-21"

ITEM	DESCRIPTION.	QT. Y
41	STANDARD SPRING WASHER	2
42	INNER HEXA CYLINDRICAL SCREW	2
43	CROSS PANHEAD TAPPING SCREW	2
44	STANDARD SPRING WASHER	1
45	CROSS PANHEAD SCREW	1
46	MALE STRAIGHT	2
47	MALE STRAIGHT	2
48	MALE RUN TEE	1
49	INSERT ELBOW $\Phi 8$, R1/8	1
50	PLASTIC PARTICLE SILENCER	4

DM 0500BL

DEMONTE PNEUS SEMI-AUTOMATIQUE 10"-21"

SEMI-AUTOMATIC TIRE CHANGER 10"-21"

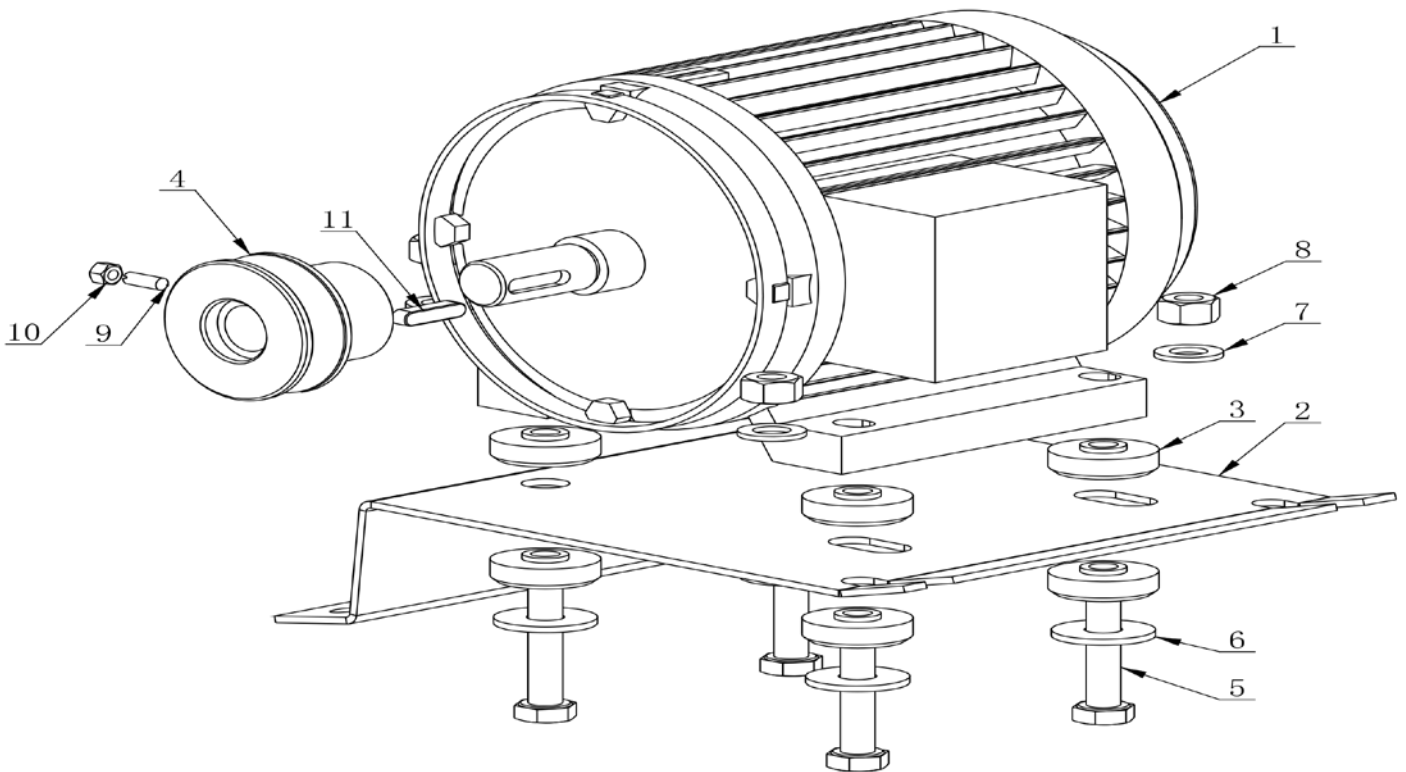


ITEM	DESCRIPTION.	QT. Y
1	MOTOR	1
2	MOTOR SUPPORT	1
3	RUBBER WASHER	8
4	MOTOR BELT PULLEY	1
5	HEXANGULAR BOLT	4
6	LARGE WASHER C GRADE	4
7	FLAT WASHER	4
8	HEXANGULAR NUT	4
9	COMMON FLAT KEY	1
10	SLOTTED CONIC HEAD SET SCREW	1
11	HEXANGULAR NUT	1

DM 0500BL

DEMONTE PNEUS SEMI-AUTOMATIQUE 10"-21"

SEMI-AUTOMATIC TIRE CHANGER 10"-21"

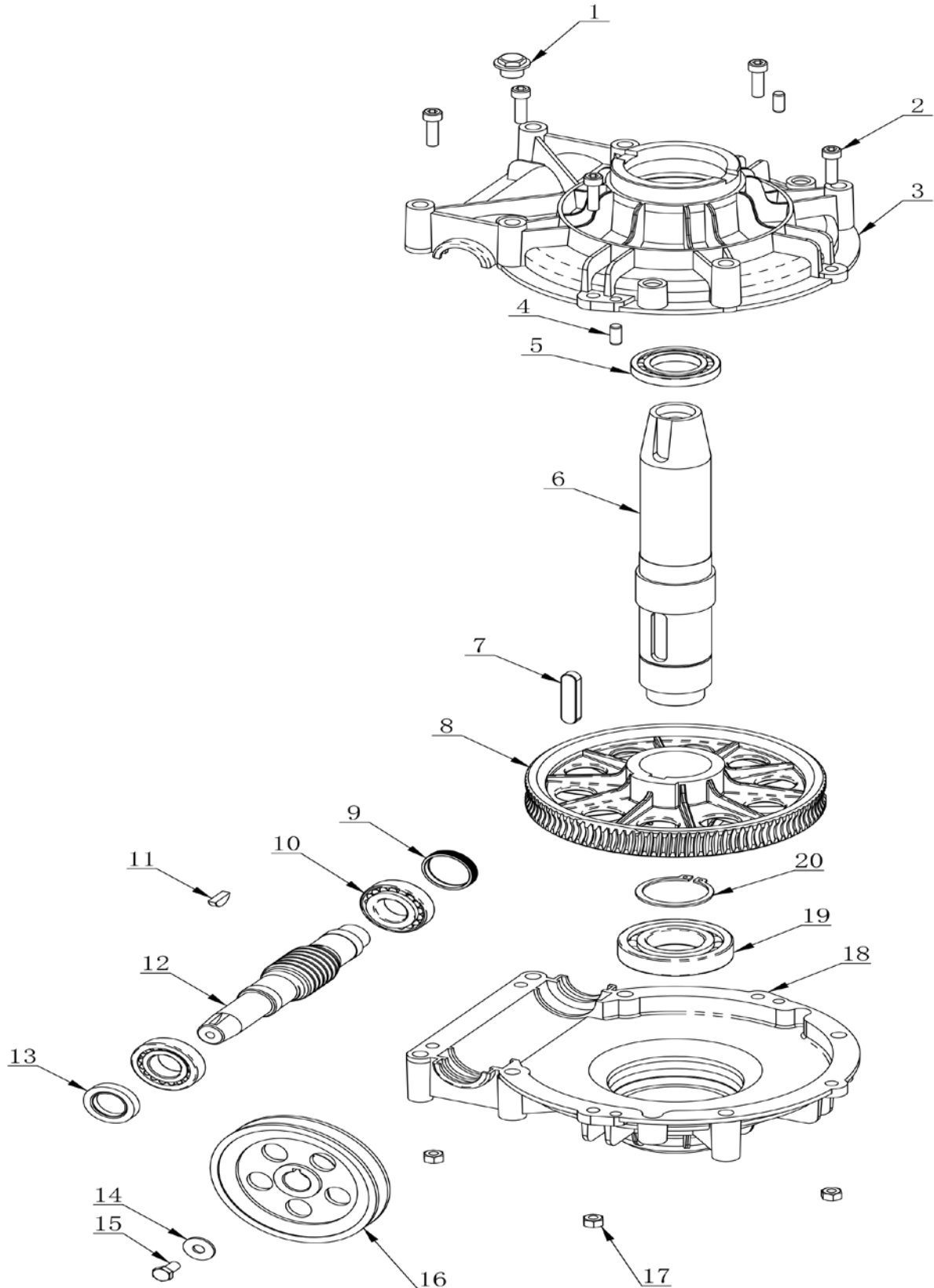


ITEM	DESCRIPTION.	QT. Y
1	MOTOR (0.75KW 380V 50Hz 3P)	1
2	MOTOR SUPPORT	1
3	RUBBER WASHER	8
4	220V MOTOR BELT PULLEY (Φ58X40)	1
5	HEXANGULAR BOLT	4
6	LARGE WASHER C GRADE	4
7	FLAT WASHER	4
8	HEXANGULAR NUT	4
9	SLOTTED CONIC HEAD SET SCREW	1
10	HEXANGULAR NUT	1
11	COMMON FLAT KEY	1

DM 0500BL

DEMONTE PNEUS SEMI-AUTOMATIQUE 10"-21"

SEMI-AUTOMATIC TIRE CHANGER 10"-21"



DM 0500BL

DEMONTE PNEUS SEMI-AUTOMATIQUE 10"-21"

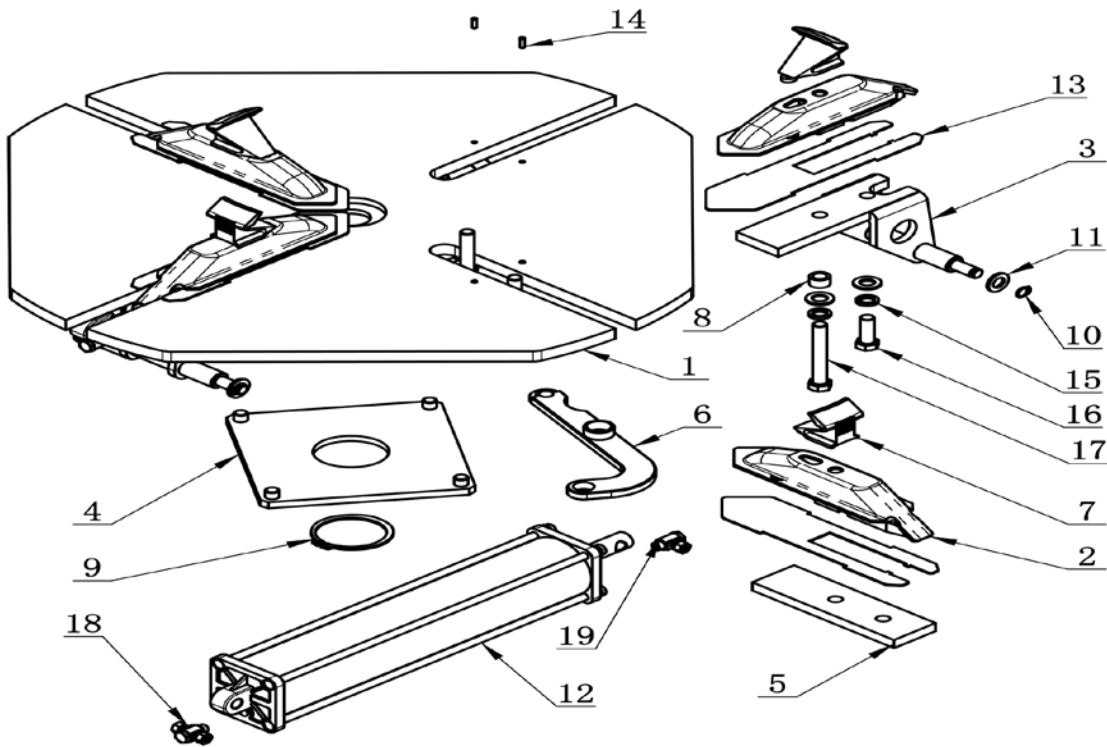
SEMI-AUTOMATIC TIRE CHANGER 10"-21"

ITEM	DESCRIPTION	QTY
1	BOLT	1
2	INNER HEXA CYLINDRICAL SCREW	5
3	GEARBOX TOP	1
4	CYLINDRICAL PIN	2
5	DEEP GROOVE BALL BEARINGS	1
6	WORM SHAFT	1
7	COMMON FLAT KEY	1
8	WORM	1
9	CAP	1
10	CYLINDRICAL BALL BEARING	2
11	COMMON SEMI-CIRCULAR KEY	1
12	WORM ROD	1
13	SEALED RING	1
14	LARGE WASHER C GRADE	1
15	HEXANGULAR BOLT	1
16	BELT PULLEY	1
17	HEXANGULAR NUT	5
18	GEARBOX TOP	1
19	DEEP GROOVE BALL BEARINGS	1
20	SHAFT ELATIC BIG RETAINING RING A-TYPE	1

DM 0500BL

DEMONTE PNEUS SEMI-AUTOMATIQUE 10"-21"

SEMI-AUTOMATIC TIRE CHANGER 10"-21"

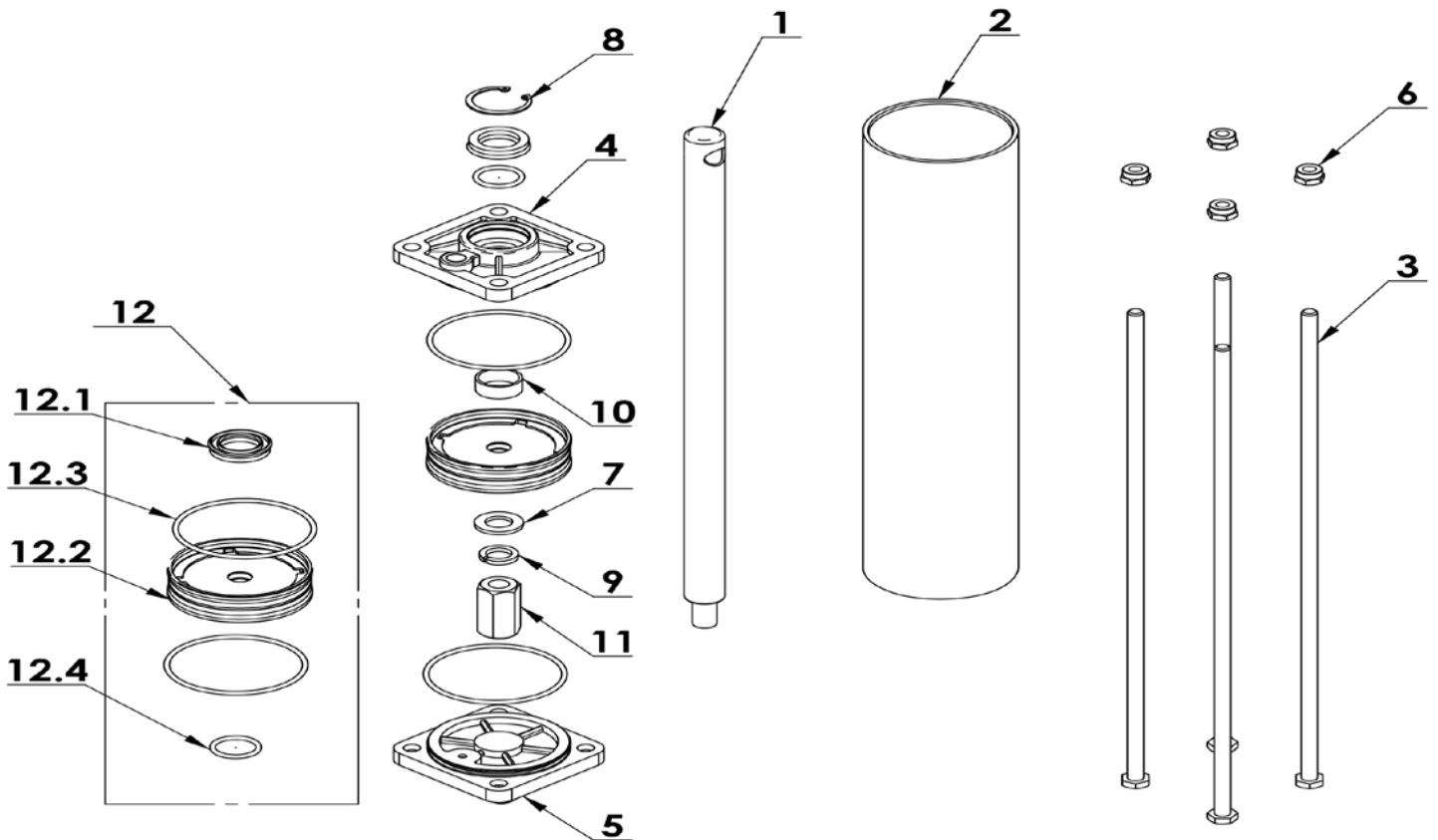


ITEM	DESCRIPTION.	QT. Y
1	TURNTABLE	1
2	SLIDE COVER	4
3	BRACKET-CYLINDER	2
4	SQUARE TURNTABLE	1
5	PRESS BOARD	2
6	CONNECTION PLATE	4
7	CLAMP	4
8	SPACER	4
9	SHAFT ELATIC BIG RETAINING RING A-TYPE	1
10	SHAFT ELATIC BIG RETAINING RING A-TYPE	4
11	FLAT WASHER	12
12	CYLINDER ASSEMBLY	2
13	WEAR-RESISTANCE SPACER	4
14	ELASTIC CYLINDRICAL PIN HEAVY	8
15	STANDARD SPRING WASHER	8
16	HEXANGULAR BOLT	4
17	HEXANGULAR BOLT	4
18	HINGE ELBOW $\Phi 6$	2
19	HINGE ELBOW $\Phi 6 R1/8"$	2

DM 0500BL

DEMONTAGE PNEUS SEMI-AUTOMATIQUE 10"-21"

SEMI-AUTOMATIC TIRE CHANGER 10"-21"

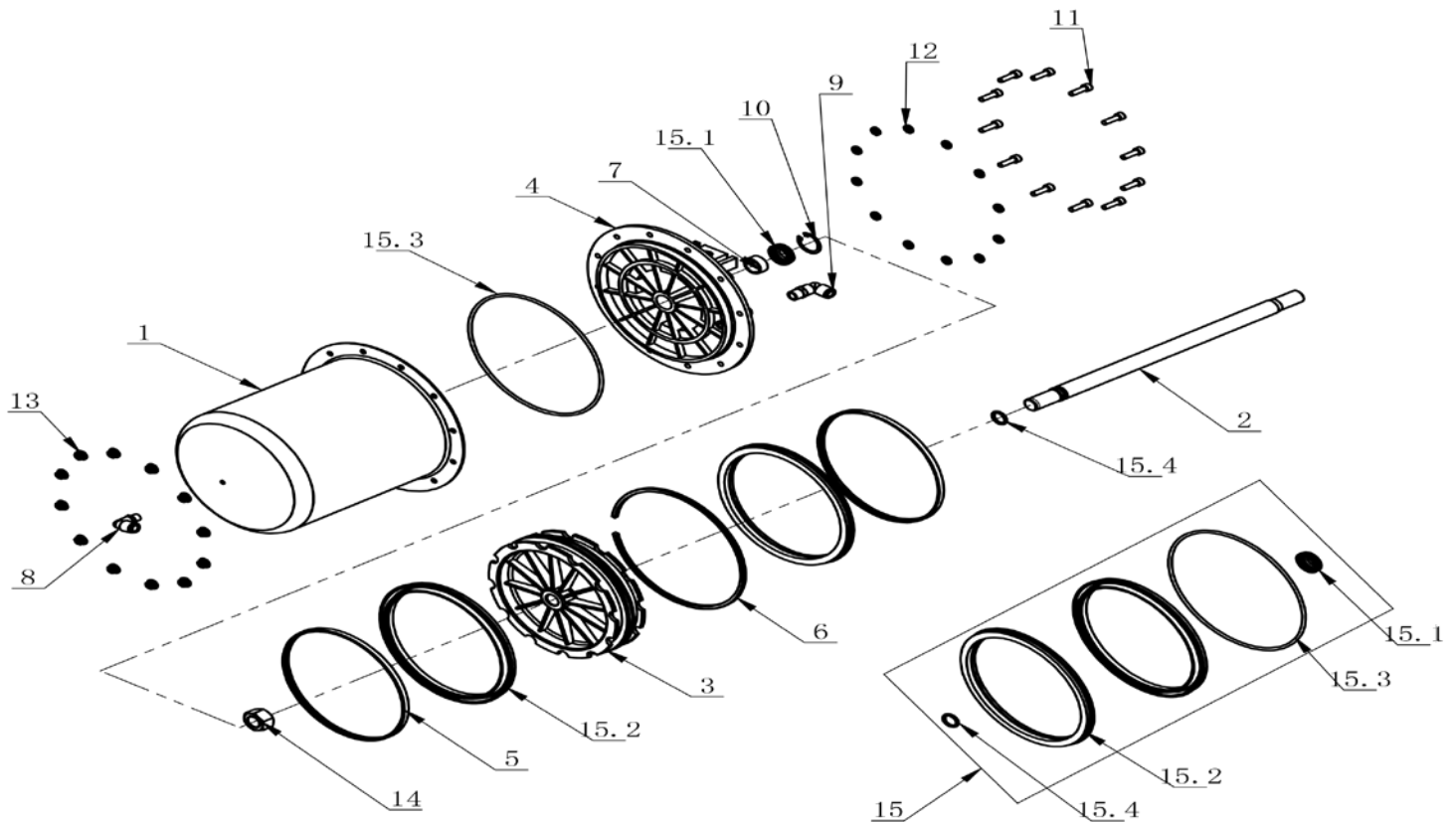


ITEM	DESCRIPTION.	QT. Y
1	SHAFT-CYLNR	1
2	SLEEVE-CYLNR 70	1
3	BOLT	4
4	FRONT COVER	1
5	REAR COVER	1
6	1-TYPE PREVAILING TORQUE TYPE HEXAGON LOCK NUT	4
7	FLAT WASHER	1
8	ELASTIC RETAINING RING A-TYPE	1
9	STANDARD SPRING WASHER	1
10	BEARING-SLIDE	1
11	AN ELONGATED NUT	1
12	CYLINDER SEALING PARTS ASSEMBLY	1
12.1	SEAL-ROD, CYLNR	1
12.2	PISTON-W/WSHR, ASSY	1
12.3	HYDRAULIC-PNEUMATIC RUBBER O-RING G TYPE	2
12.4	WASHER TO SUBSTITUE RUBBER O-RING G TYPE	1

DM 0500BL

DEMONTAGE PNEUS SEMI-AUTOMATIQUE 10"-21"

SEMI-AUTOMATIC TIRE CHANGER 10"-21"

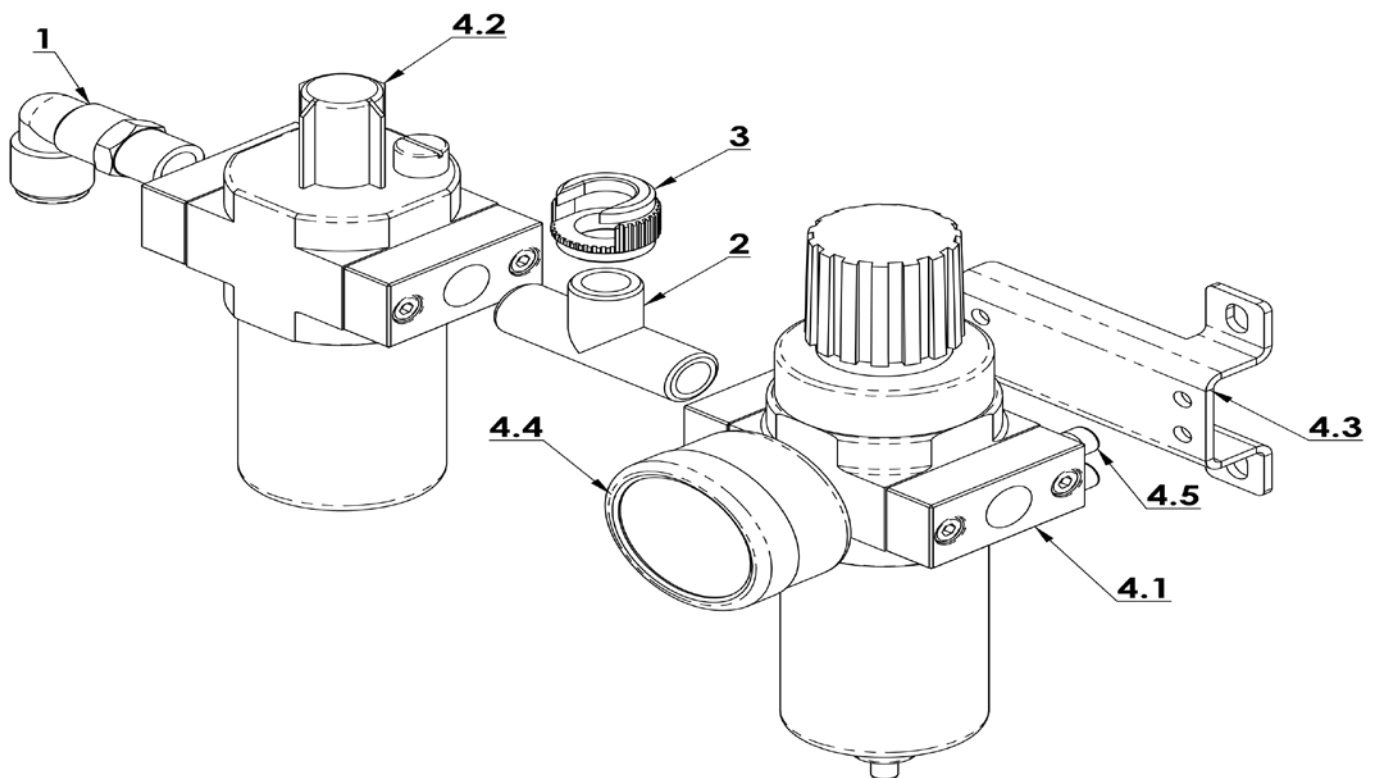


ITEM	DESCRIPTION.	QT. Y
1	CYLINDER BODY	1
2	CYLINDER PISTON ROD	1
3	PISTON	1
4	CYLINDER COVER	1
5	CLAMP RING	2
6	PISTON SUPPORT RING	1
7	GUIDER SPACER	1
8	INSERT ELBOW $\Phi 8$, R1/8	1
9	INSERT ELBOW $\Phi 8$, R1/4	1
10	ELASTIC RETAINING RING B-TYPE	1
11	INNER HEXA CYLINDRICAL SCREW	12
12	FLAT WASHER	12
13	HEXA FLANGE NUT	12
14	NUT THIN TOOTH	1
15	CYLINDER SEALING PARTS ASSEMBLY	1
15.1	SEAL-ROD, CYLNDR	1
15.2	Y-RING	2
15.3	O-RING G TYPE	1
15.4	HYDRAULIC-PNEUMATIC RUBBER O-RING G TYPE	1

DM 0500BL

DEMONTE PNEUS SEMI-AUTOMATIQUE 10"-21"

SEMI-AUTOMATIC TIRE CHANGER 10"-21"

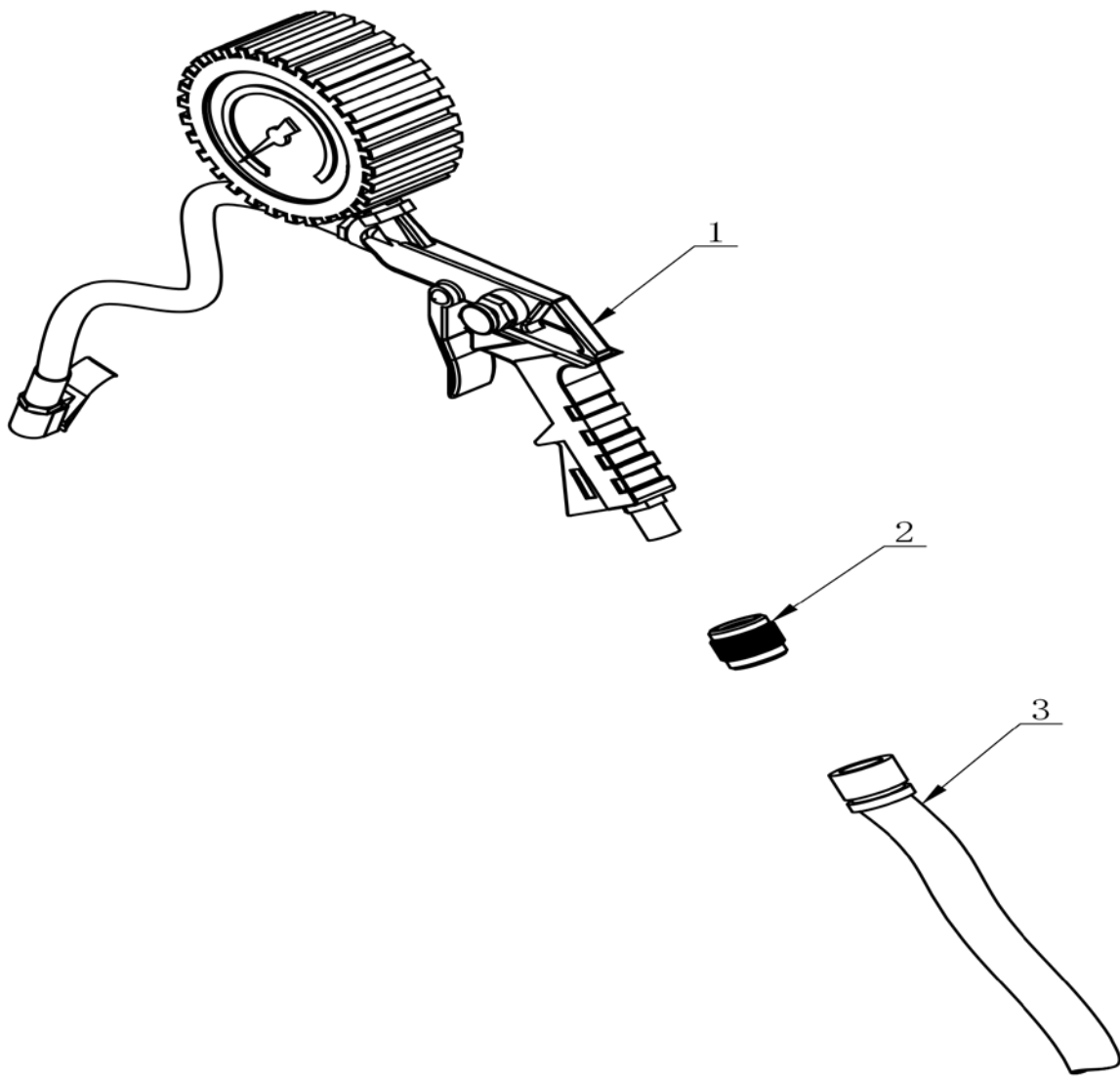


ITEM	DESCRIPTION.	QT. Y
1	INSERT ELBOW $\Phi 8$, R1/4	1
2	FAMALE UNION TEE	1
3	OPEN NUT	1
4	AIR REGULATOR	1
4. 1	OIL CPU	1
4. 2	WATER CPU	1
4. 3	AIR REGULATOR BRACKET	1
4. 4	PRESSURE GAUGE	1
4. 5	INNER HEXA CYLINDRICAL SCREW	4

DM 0500BL

DEMONTE PNEUS SEMI-AUTOMATIQUE 10"-21"

SEMI-AUTOMATIC TIRE CHANGER 10"-21"

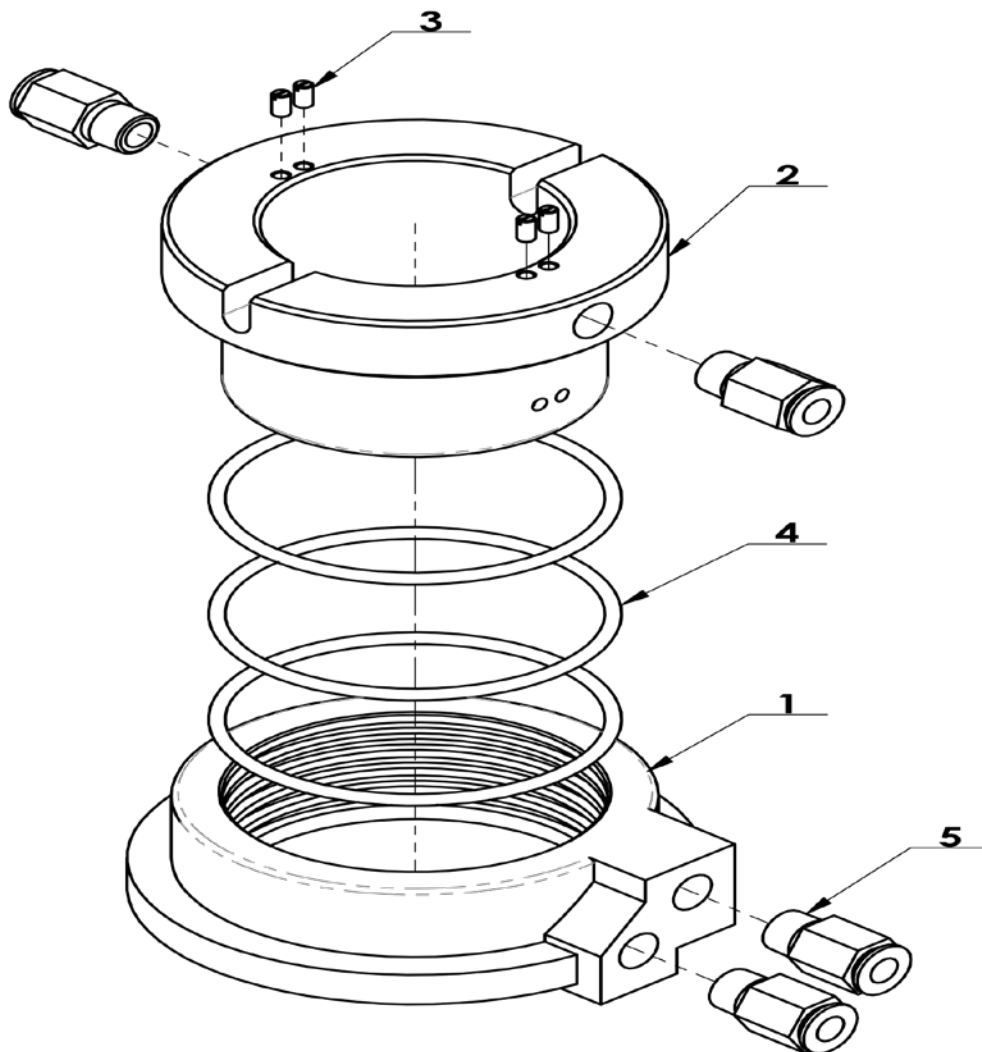


ITEM	DESCRIPTION.	QT. Y
1	INFLATING GUN	1
2	OPEN NUT	1
3	INFLATION HOSE	1

DM 0500BL

DEMONTE PNEUS SEMI-AUTOMATIQUE 10"-21"

SEMI-AUTOMATIC TIRE CHANGER 10"-21"

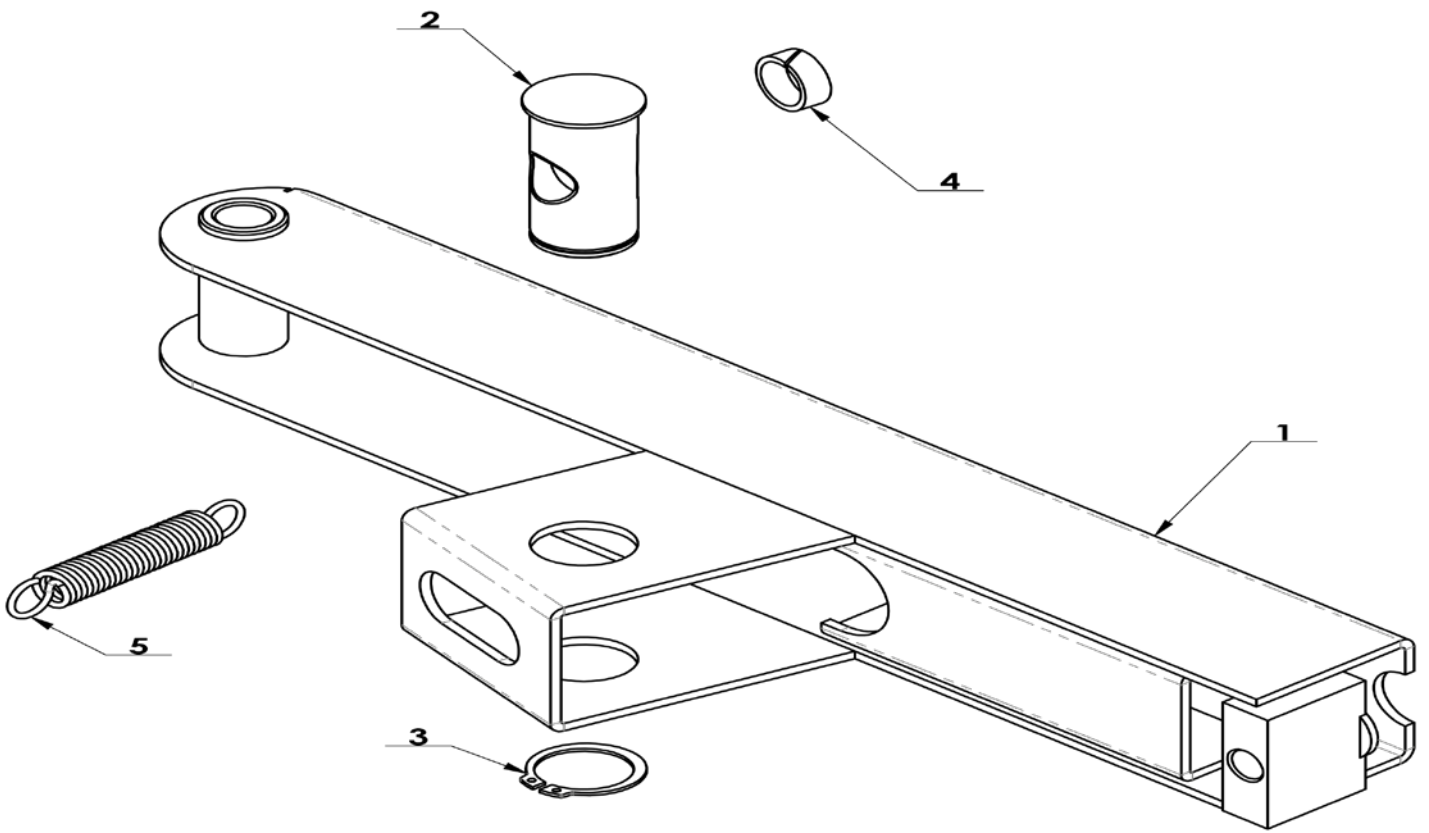


ITEM	DESCRIPTION.	QT. Y
1	AIR GUIDE EXTERNAL BUSHING	1
2	AIR GUIDE ROTATION BUSHING	1
3	SLOTTED FLATTEN HEAD SET SCREW	4
4	HYDRAULIC-PNEUMATIC RUBBER O-RING G TYPE	3
5	MALE STRAIGHT	4

DM 0500BL

DEMONTE PNEUS SEMI-AUTOMATIQUE 10"-21"

SEMI-AUTOMATIC TIRE CHANGER 10"-21"

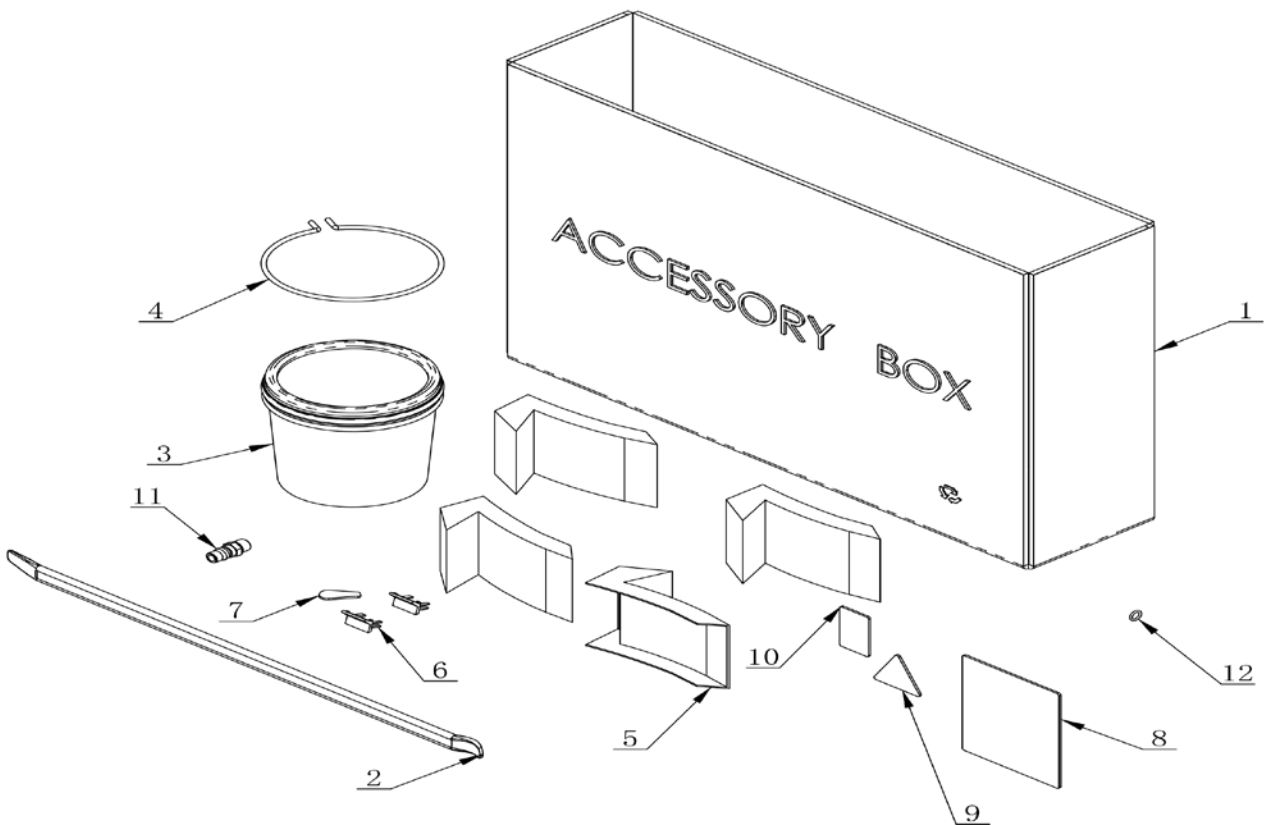


ITEM	DESCRIPTION.	QT. Y
1	BEAD BREAKING ARM ASSEMBLY	1
2	BEAD BREAKING ARM SLIDE BUSHING	1
3	SHAFT ELATIC BIG RETAINING RING A-TYPE	1
4	SLIDE SPACER	1
5	SPRING	1

DM 0500BL

DEMONTE PNEUS SEMI-AUTOMATIQUE 10"-21"

SEMI-AUTOMATIC TIRE CHANGER 10"-21"



ITEM	DESCRIPTION.	QT. Y
1	ACCESSORY BOX	1
2	20INCH CROWBAR	1
3	GREASE CONTAINER	1
4	BRACKET	1
5	CLAMP PROTECTION COVER	4
6	SHEATH	2
7	PLASTIC COVER	1
8	USER MANUAL	1
9	PASS CARD	1
10	GUARANTEE	1
11	AIR SUPPLY CONNECTOR	1
12	HYDRAULIC-PNEUMATIC RUBBER O-RING G TYPE	1